



**Care Massachusetts
The Opioid Abatement
Partnership**

Care Massachusetts Core Training and Technical Assistance Team



Kate Lena
JSI



Carly Bridden
BMC



Guillermo Ronquillo
JSI



Wini Bakshi
JSI



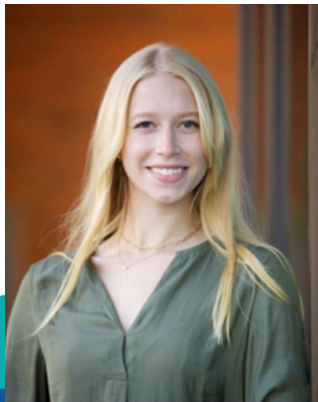
Cheryl Sbarra
MAHB



Jenn Robertson
MAHB



Sasha Bianchi
JSI



Gretchen Shoemaker
JSI



Background: Care Massachusetts

Care Massachusetts is working collaboratively with cities and towns across the state to take action to end the overdose crisis.

We provide resources and technical assistance with:

- ❑ Connecting municipalities with the people most impacted by the overdose crisis
- ❑ Promoting the selection and implementation of proven public health strategies
- ❑ Educating the public on the source and purpose of the funds
- ❑ Facilitating collaboration across municipalities



Expenditure Reporting

Data Assurance Process
12/12/2024



AGENDA

- **Review:**
 - **List of municipalities**
 - **List of feedback categories**
 - **Example**
 - **Timeline**
 - **Results from this review**



Municipalities with assurance checks

Agawam	Bourne	Dartmouth	Franklin	Lakeville
Alford	Boxford	Deerfield	Gardner	Lancaster
Amesbury	Boylston	Dedham	Georgetown	Lanesborough
Amherst	Braintree	Dennis	Grafton	Lawrence
Andover	Brewster	Douglas	Granby	Lee
Arlington	Bridgewater	Dover	Greenfield	Leicester
Ashland	Bristol County	Dracut	Groton	Lenox
Athol	Brockton	Duxbury	Hadley	Leominster
Attleboro	Brookline	East Bridgewater	Halifax	Leverett
Auburn	Burlington	Eastham	Hancock	Lexington
Avon	Cambridge	Easthampton	Hanover	Lincoln
Ayer	Canton	East Longmeadow	Harvard	Littleton
Barnstable	Carlisle	Easton	Harwich	Longmeadow
Barnstable County	Carver	Edgartown	Haverhill	Lowell
Bedford	Chatham	Egremont	Hingham	Ludlow
Belchertown	Chelmsford	Erving	Holbrook	Lunenburg
Bellingham	Chelsea	Everett	Holden	Lynn
Belmont	Chesterfield	Fairhaven	Holliston	Lynnfield
Berkley	Chicopee	Fall River	Holyoke	Malden
Berlin	Clinton	Falmouth	Hopedale	Manchester
Beverly	Cohasset	Fitchburg	Hopkinton	Mansfield
Billerica	Concord	Foxborough	Hudson	Marblehead
Boston	Danvers	Framingham	Ipswich	Marion

Municipalities with assurance checks

Marlborough	Norfolk	Plymouth	Somerset	Walpole	
Marshfield	North Adams	Princeton	Somerville	Waltham	
Mashpee	Northampton	Provincetown	Southampton	Ware	
Mattapoissett	North Andover	Quincy	Southborough	Wareham	
Maynard	North	Randolph	Southbridge	Watertown	
Medfield	Attleborough	Raynham	South Hadley	Wayland	
Medway	Northborough	Reading	Springfield	Webster	
Melrose	Northbridge	Revere	Stoneham	Wellesley	
Methuen	North Brookfield	Rochester	Stoughton	Westborough	Wilmington
Middleborough	North Reading	Rockland	Sturbridge	West Boylston	Winchendon
Middleton	Norton	Rockport	Sudbury	West Bridgewater	Winchendon
Milford	Norwell	Rowe	Sutton	Westfield	Winchester
Millbury	Norwood	Rowley	Swampscott	Westford	Winthrop
Millis	Oak Bluffs	Salem	Swansea	Westhampton	Woburn
Milton	Orange	Salisbury	Taunton	West Newbury	Worcester
Monson	Orleans	Sandwich	Tewksbury	Weston	Wrentham
Nantucket	Oxford	Saugus	Tisbury	Westport	
Natick	Palmer	Scituate	Topsfield	West Springfield	
Needham	Peabody	Seekonk	Townsend	West Tisbury	
New Bedford	Pembroke	Sharon	Tyngsborough	Westwood	
Newbury	Petersham	Sheffield	Upton	Weymouth	
Newburyport	Pittsfield	Sherborn	Uxbridge	Whitman	
Newton	Plainville	Shrewsbury	Wakefield	Williamstown	

Categories

- FY24 Amount received:
 - *These have been reconciled. Rubric serves as a confirmation those changes were made.*
- Amounts received all years:
 - *The amount received in all years should equal the amount of funding received in FY23 & FY24*
- Amounts Carried over from previous years:
 - *The carryover amount should equal the amount the total amount of funding that remained at the end of FY23 per expenditure report*



Categories

- Total funds available in FY24:
 - *The amount available should equal the amount of funding carried over from previous years + the amount received in FY24.*
- Amount expended:
 - *The amount of expenditures should equal the total of all expenses listed in the Strategy Implementation overview section.*
- Amount remaining:
 - *This amount should equal the total funds available in FY24 minus (-) any expenditures in FY24.*



Categories

- Pooled funding:
 - *(ex: checked pooled funding in FY24, no IMA in effect)*
- Expended Per Strategy:
 - *(ex: anomaly in amounts listed)*
- OTHER strategies:
 - *(ex: OTHER strategies can be categorized as approved strategies already listed in the Shared Services Agreement)*



EXAMPLE: FY24 Amount Received

	Action Item	Description
FY24 Amount received	No action required	<i>We have updated Alford's FY24 Expenditure Report to reflect \$381.10 received in FY24.</i>



EXAMPLE: Amount Received All Years

<p>Amounts received all years</p>	<p>Revisions required</p>	<p><i>The current amount of \$92,253.53 appears to be in error. The amount listed by the AGO indicates that you have received \$75,052.08 in total (FY23 and FY24).</i></p> <p><i>Please confirm the amount your municipality received in all years the column to the right.</i></p> <p><i>The amount received in all years should equal the amount of funding received in FY23 & FY24.</i></p>
-----------------------------------	---------------------------	---



EXAMPLE: Amounts Carried Over from Previous Years

<p>Amounts Carried over from previous years</p>	<p>Confirmation requested</p>	<p><i>The current amount of \$51,996.95 needs confirmation. Our records from the FY23 reporting cycle indicate that you have carried over \$34,795.50 from FY23.</i></p> <p><i>Please confirm your municipality's carried over amount in the column to the right.</i></p> <p><i>The carryover amount should equal the amount the total amount of funding that remained at the end of FY23.</i></p>
---	-------------------------------	--



EXAMPLE: Total Funds Available in FY24

Total funds available in FY24	Revisions required	<p><i>The current amount of \$92,253.53 needs confirmation. Our records indicate that this amount should be equal to \$75,052.08.</i></p> <p><i>Please confirm your municipality's amount available for expenditures in FY24 in the column to the right.</i></p> <p><i>The amount available should equal the amount of funding carried over from previous years + the amount received in FY24.</i></p>
-------------------------------	--------------------	--



EXAMPLE: Amount Expended

Amount expended	Revisions required	
		<p><i>The current amount of \$00.00 appears to be in error. See "Expended per Strategy" section below.</i></p> <p><i>Please specify the total amount of expenditures in FY24 in the column to the right. Please include exact dollars and cents.</i></p> <p><i>The amount of expenditures should equal the total of all expenses listed in the Strategy Implementation overview section.</i></p>



EXAMPLES: Amount Remaining

Amount remaining	Confirmation requested	<p><i>The current amount of \$84,287.05 needs confirmation. Our records indicate that this amount should be equal to \$67,085.60.</i></p> <p><i>Please confirm your municipality's amount remaining at the close of FY24 in the column to the right.</i></p> <p><i>This amount should equal the total funds available in FY24 minus (-) any expenditures in FY24.</i></p>
------------------	------------------------	---



EXAMPLE: Pooled Funding

Pooled funding	Revisions required	<p><i>The indication that funds were pooled in FY24 appears to be in error.</i></p> <p><i>The Great Meadows fiscal agent reported that no funds were formally pooled in FY24.</i></p> <p><i>Please confirm that Concord did not pool funds in FY24.</i></p>
----------------	--------------------	---



EXAMPLE: Expended Per Strategy

Expended Per Strategy	Revisions required	
		<p>Please review the amounts expended under each strategy to ensure that the totals match the total that you reported spending in FY24. The calculated totals reported by strategy are equal to \$10,000.00, while you reported that the total you expended in FY24 was \$0.</p> <p>Please confirm the total amount expended on strategies in FY24 in the column to the right.</p>



EXAMPLE: OTHER strategies

OTHER strategies	Approval requested	
		<p>Care Mass has made the following adjustments to your report to align with the approved strategies checklists. Please approve these changes or provide additional guidance in the column to the right:</p> <p>Under Support for People in Treatment and Recovery we selected:</p> <p><input type="checkbox"/> Provide access to housing for people with OUD, including supportive housing, recovery housing, housing, rent, move-in deposits, and utilities assistance programs, training for housing providers, or recovery housing programs that integrate FDA-approved medication with other support services.</p> <p>This aligns more closely with your original Connections to Care open-ended response to OTHER: (Providing sober housing beds and comprehensive support for those living in recently closed homeless encampments)</p> <p>In addition, we also</p> <ul style="list-style-type: none"> --Reallocated the \$100,000 from Connections to Care to Support for People in Treatment and Recovery --Reassigned Connections to Care as "no work in this area" and Support for People in Treatment and Recovery as "Early implementation"



TIMELINE

Thurs. Dec 12, 2024	Office Hours
Fri. Dec 13 through Fri Dec 20, 2024	Distribute Notifications
Fri Dec 20, 2024 through Fri Jan 3, 2025	Confirmations, Clarifications, or Revisions Due

Results from this review

Lack of response to requests for confirmation, clarification, or revisions will result in your report being considered incomplete.

- Report will not be posted on the Dashboard
- May be deemed ineligible to participate in the Mosaic Municipal Matching Grant program.



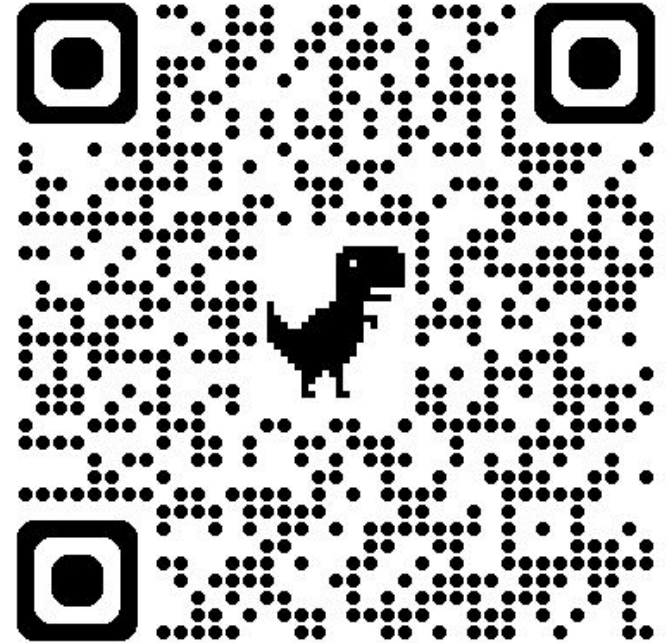
mosaic
opioid recovery partnership

Helpful Resources

Visit:

www.caremass.org/expenditure-reporting/

Expenditure Reporting
Questions and User Manual

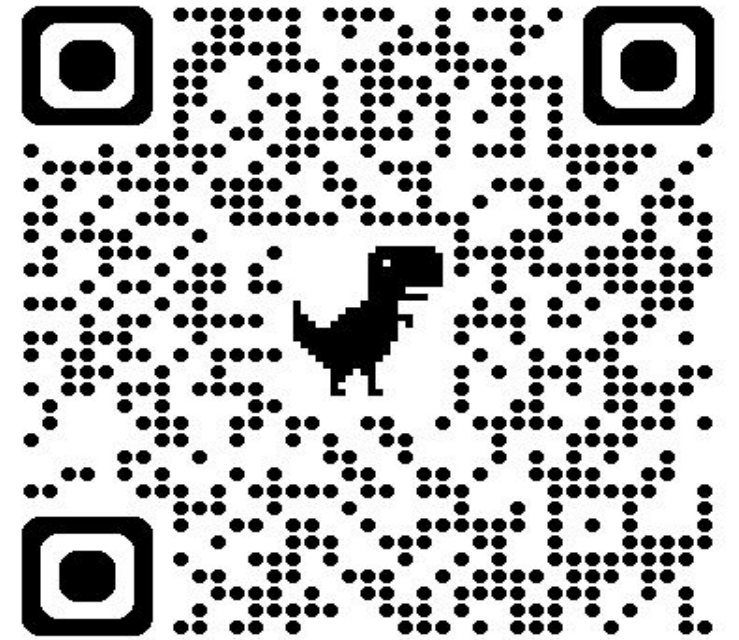


Helpful Resources:

Visit:

www.caremass.org/past-events/

Slides and Recording



Questions?



UPCOMING EVENTS

- ❑ Dec. 19, 2-3 pm - Police Assisted Addiction and Recovery Initiative (PAARI) Opioid Abatement Fund Usage Overview | [Register Here](#)
- ❑ [Previous office hours slides and recordings](#)
- ❑ [Request individualized technical assistance](#)
- ❑ Sign up for our [listserv](#)



Feedback Survey

Please take a couple minutes to respond to the anonymous feedback survey after the call ends



THANK YOU!

